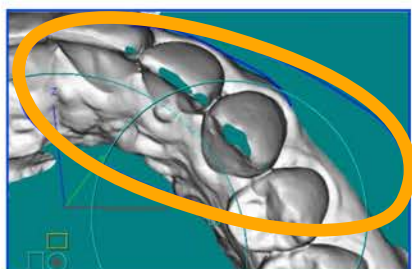


SureSmile® Clear Aligners Scanning Requirements

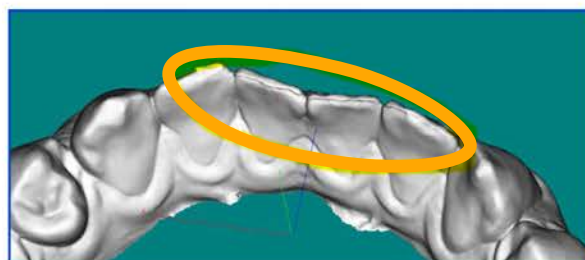


When scanning for SureSmile® Clear Aligners, it is important to note that you **must** scan the patient's upper arch, lower arch, and bite, even if you are only treating a single arch. You will also want to ensure that the teeth are clear of any plaque or tartar prior to starting your scan.

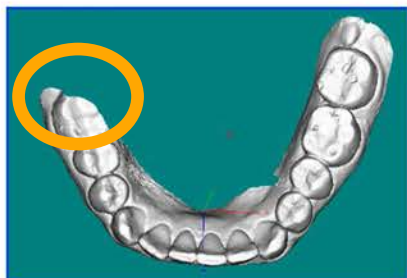
- With your patient still in the chair, you will want to evaluate the scan data that was captured to ensure that you do not need to collect additional data.
 - When evaluating the scan there are multiple things that you want to look at to determine if the scan is of good quality.
1. Be sure you have captured the upper arch, lower arch, and bite scan.
 2. Confirm you have 100% tooth coverage.
 3. Verify that the scan does not have any holes or missing data, such as the distal portion of the patient's last present molar or in the interproximal contacts of the teeth.
 4. Look at each tooth to see if there has been any data shift, also known as double shelling. This can be very common in the anterior teeth.
 5. Be sure you have captured at least 2mm of gingiva around the entire mouth.



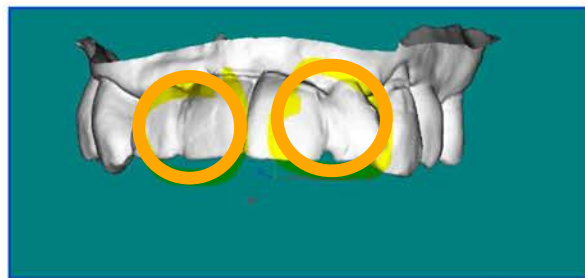
SCAN DATA WITH HOLES



DATA SHIFT (DOUBLE SHELLING)



MISSING DATA



POOR SCAN QUALITY