

SureSmile®



# New Enhancements in SureSmile® Ortho & Advanced July 2022 Release

# User Enhancements in July 2022 Release

- ⌘ The July Release includes the following enhancements added since the previous April Release.
- ⌘ **Important Note:** After every SureSmile® Advanced, Ortho, and Aligner software update, we recommend clearing your browser cache to remove any remnants of the old version to optimize software performance. The steps to follow depend on the browser you are using, and are linked here for your convenience:
  - ⌘ [Steps for Mozilla Firefox](#)
  - ⌘ [Steps for Apple Safari](#)
  - ⌘ [Steps for Google Chrome](#)



# User Enhancements in July 2022 Release

## ⊞ User Enhancements

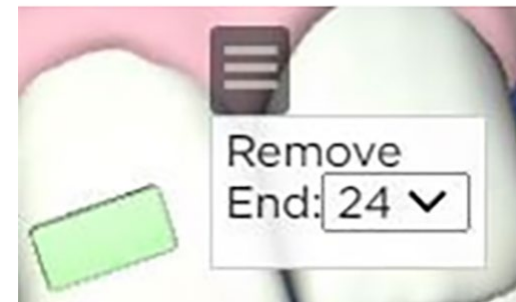
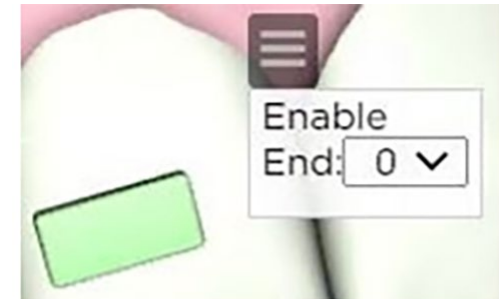
- ⊞ **Attachments:** Enable removal of scanned attachments in staging (all platforms) .....3
- ⊞ **System & Account Cleanup:** Cancel older open Full-Service Aligner Cases (all platforms) .....4
- ⊞ **Staging Improvements:** Root balancing (all platforms) .....7
- ⊞ **Pontic Enhancements:** Improvements to appearance and size (all platforms) .....9
- ⊞ **Aligner & Retainer Ordering:** Text added to order dialog box (all platforms) .....10
- ⊞ **SureSmile VPro:** Now available for purchase through DIY cases (Ortho/Advanced) ..... 11



# Attachments: Enable Removal of Scanned Attachments in Staging

It is now possible to enable/disable scanned attachments during the staging. Previously when scanned attachments are kept on the model, it was not possible to remove them for the retainer order. These kept attachments can now be removed at any stage. You can ask the Digital Lab to remove them, or you can do it on your own as shown on the right.

The scanned attachments will always be visible in malocclusion (stage 0). They will be disabled by default for all other stages. If you select the attachment, the pop-up menu will be displayed to enable the attachment. Once enabled, you can select the last stage where the attachment appears on the model from the 'End' drop-down menu. You can also remove the attachment but it will always remain in the malocclusion (stage 0).



**Please note that this must be done while in To Review status. Once approved this cannot be modified further.**

# System & Account Cleanup: Cancel Older Open Full-Service Aligner Cases

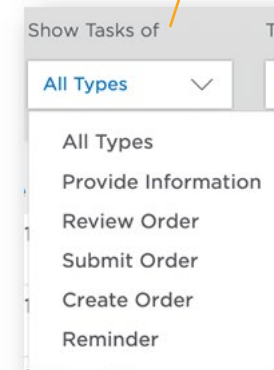
## Open cases which have been in their current status for more than 180 days with the following criteria will be cancelled automatically on a daily basis:

- Full-service Aligner Case, either initial order or refinement (includes both Complete & Select cases)
- Setup & Staging with a To Review / Not Ordered status
- Plans with a Needs information status
- Therapeutic Models with a status of:
  - On Hold
  - Not Ordered
  - Rejected
- Integration cases (CEREC / 3Shape)

## Open cases with the following criteria will NOT be cancelled:

- Cases with Premium models
- Demo cases

See cases with different statuses using this filter on the Tasks page



**Once a case is cancelled, the patient can still be found but the treatment plan is no longer visible.**

# System & Account Cleanup: Cancel Older Open Full-Service Aligner Cases

**You can now cancel a Full-Service Aligner case in the following states:**

- Setup & Staging/Staged Models in To Review
- Setup/Plan in Needs Information
- Therapeutic Model in On Hold

**You will need to indicate the cancellation reason in the pop-up.**

**Patient will remain active but the case will be cancelled; this cannot be undone.**

**A new case can be ordered once the older case is cancelled.**

### Cancellation Reason ✕

Choose one cancellation reason:

- Patient did not accept treatment due to cost
- Patient did not accept treatment due to length of treatment
- Patient requires a new treatment plan
- Incorrect patient data submitted
- Decided to use a different aligner company due to cost
- Decided to use a different aligner company due to treatment plan
- Referred to specialist
- Other (please specify):

**WARNING: Once the Full Service Aligner case is cancelled it will no longer be available. This action cannot be undone.**

Close Confirm

# System & Account Cleanup: Cancel Older Open Full-Service Aligner Cases

You will receive a cancellation task and a cancellation notification email at 30 days, 1 week, and 1 day prior to automatic cancellation.

You can change these settings in Task Owner preferences.

### Task Owner

Products:	Order Assignments	Review/Approve Assignments
Therapeutic Model	Both	
Setup		Both

Tasks:	Tasks Assignments
Resolve Hold	Both
Upload Scan Data	Both
Cancel Case	Doctor
Task Assignment Email Notification	None
Shipment Email Notification	Doctor

#### Task Reminder Period

Settings below are applicable for digital products for Full-service Aligner cases: Therapeutic Model, Setup, Staging

Cancel Case	<input checked="" type="checkbox"/> 30 days before automatic cancelling
	<input checked="" type="checkbox"/> 1 week before automatic cancelling
	<input checked="" type="checkbox"/> 1 day before automatic cancelling

**Save**

# Staging Improvements: Root Balancing

The automated staging will now balance the torque and buccal/lingual movement so that both directions are realized with the same number of stages.

For Full-Service Aligner cases it will be applied by the Digital Lab automatically.

For DIY cases in Ortho & Advanced: within the existing Aligner Constraints dialogue, a dropdown section “Root balancing” is displayed with a “Skip root balancing” checkbox. When the checkbox is checked root balancing will be skipped.

The screenshot shows the 'Constraints' dialog box with the following sections and settings:

- Aligners** | Attachments | Trim Type
- Custom (Clinic Single Group Crowding) [Edit]
- IPR Settings**
  - Number of aligners between appointments: 4
  - First IPR Stage: 6
  - IPR at 1st appointment
- Accommodation Stage**
  - Skip accommodation stage
- Root Balancing**
  - Skip root balancing
- Maximal Values**

Direction	Maximal Values			Alignment Type
	Antagonistic	Standalone	Synergistic	
Rotation	1 deg	2 deg		Start
Facial Crown Torque	1 deg	1 deg	2 deg	Start
Lingual Crown Torque	1 deg	1 deg	2 deg	End
Buccal Movement (anterior)	0.1mm	0.2mm	0.2mm	Start
Buccal Movement (posterior)	0.1mm	0.2mm	0.3mm	Start
Angulation Mesial	1 deg	1 deg	1 deg	Spread Out
Mesial Movement (anterior)	0.1mm	0.2mm	0.2mm	Start
Mesial Movement (posterior)	0.1mm	0.2mm	0.3mm	Start
Lingual Movement (anterior)	0.1mm	0.2mm	0.2mm	End
Lingual Movement (posterior)	0.1mm	0.2mm	0.3mm	End
Extrusion (anterior)	0.1mm	0.1mm		End
Extrusion (posterior)	0.1mm	0.1mm		End
Intrusion (anterior)		0.1mm	0.2mm	Start
Intrusion (posterior)		0.1mm	0.2mm	Start
Angulation Distal	1 deg	1 deg	1 deg	Spread Out
Distal Movement (anterior)	0.1mm	0.2mm	0.2mm	Start
Distal Movement (posterior)	0.1mm	0.2mm	0.3mm	Start

Over-Correction:  No Over-Correction  Apply Over-Correction

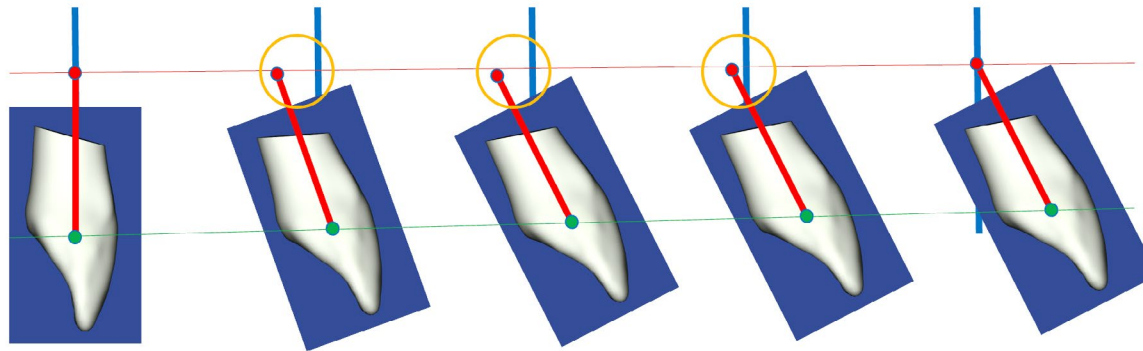
Excluded Teeth: [Teeth icons] Legend

Maximal Stage Count: Apply Stage Count Maximum: 3



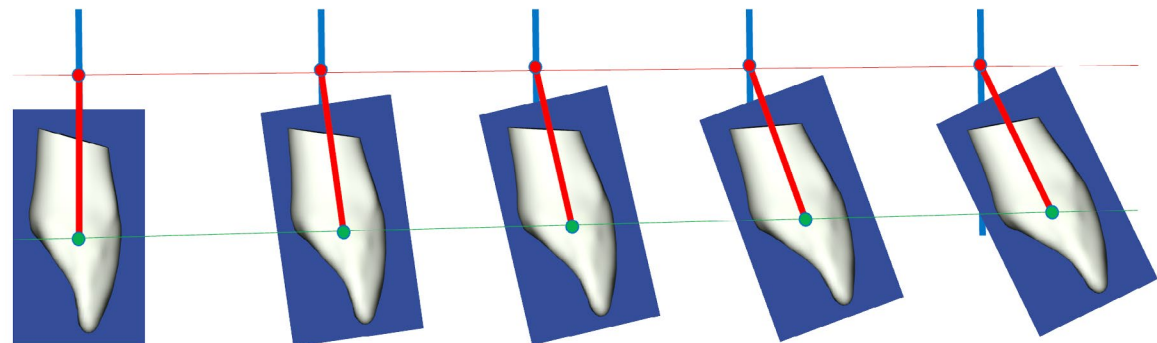
# Staging Improvements: Root Balancing

Before: Torque is leading (not in sync with buccal movement)



Start	Stage 2	Stage 3	Stage 4	End
0 % Torque	50 % Torque	100 % Torque	100% Torque	100 % Torque
0 % Buccal	25 % buccal	50 % buccal	75 % buccal	100 % buccal

After: Torque and buccal movement synchronized

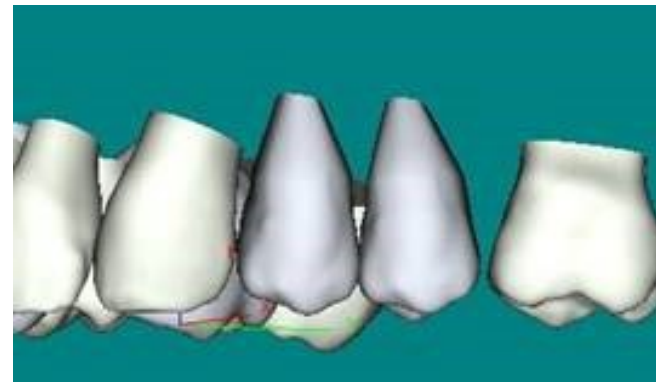
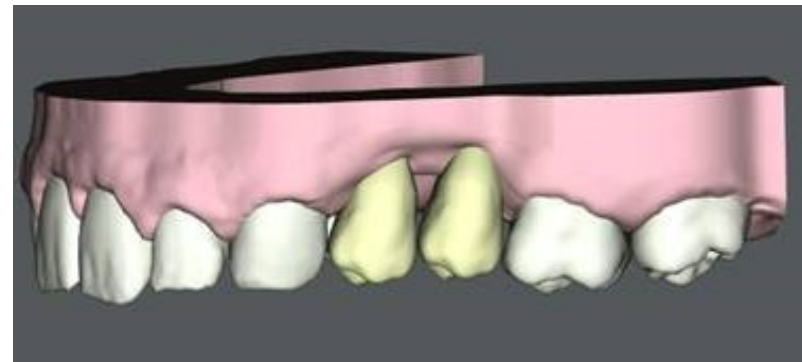
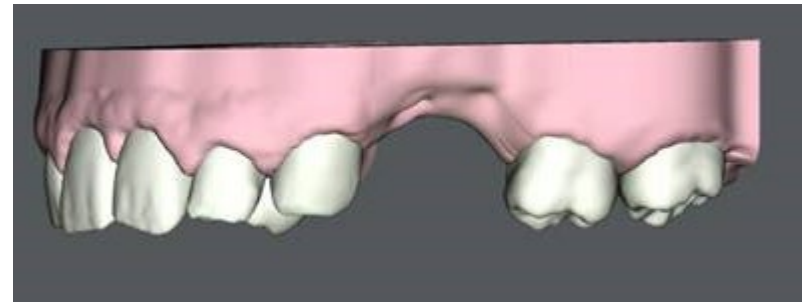


Start	Stage 2	Stage 3	Stage 4	End
0 % Torque	25 % Torque	50 % Torque	75 % Torque	100 % Torque
0 % Buccal	25 % buccal	50 % buccal	75 % buccal	100 % buccal

# Pontic Enhancements: Improvements to appearance and size

If multiple pontics are placed next to each other, a clear definition and hierarchy will be applied.

Pontics had long root structures that could not be scaled down and at times, stuck out of the gingiva model on the Buccal and/or Lingual surface effecting the contour of the trimline in the Aligners. The pontics have been redesigned so that the base of the pontic is shorter with a tapered stem that will not affect the natural contour of the patient's gingiva.



# Aligner & Retainer Ordering: Text Added to Order Dialog Box

Descriptive text has been added to the Order Aligners and Order Retainers dialog boxes to give additional information on SureSmile Retainers.

Choose your pricing option ✕

**Complete Option**

USD per patient, unlimited refinements for 3 years following first order  
 USD per retainer  
Refinements: free for 3 years  
SureSmile™ Whitening Kit included; ships approximately 6 weeks prior to end of treatment.  
**SureSmile® VPro™** vibration device included

**Select Option**


USD per aligner  
 USD per retainer  
Full service aligner:  USD  
Refinements:  USD plus  USD per aligner  
SureSmile™ Whitening Kit included; ships approximately 6 weeks prior to end of treatment.  
 Include **SureSmile® VPro™** vibration device with Aligners:  USD

**SureSmile® Retainers** can be ordered any time after placing your initial aligner order. A reminder to "Order Retainers" will appear in your task list 6 weeks prior to end of treatment if retainers have not previously been ordered.

Trim Type & Height Close Next

Order Retainers ? ✕

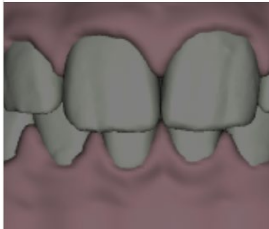
SureSmile® Retainers



SureSmile® Retainers are designed to provide adequate mechanical and functional forces for the retention of the final occlusion to help prevent teeth relapse. SureSmile® Retainers have the strength to protect teeth from damage caused by bruxing or grinding without compromising the retainer's clinical effectiveness. When cared for as directed, SureSmile® Retainers can be worn up to 12 months.<sup>1</sup>

1 Data on File.

Close Next



# SureSmile® VPro™: Now Available for Purchase through DIY cases

You can now order a SureSmile® VPro™ device with the first physical Aligner order in a Do-It-Yourself Aligner case

The screenshot shows a web interface titled "Order Aligners" with a close button (x) in the top right corner. It features two rows of checkboxes for "Upper" and "Lower" aligners, each followed by 12 numbered buttons (1-12). The "Upper" row has a "T9" label above the 9th button. Below these is a "Legend" checkbox. A red box highlights a checkbox labeled "Include SureSmile® VPro™ vibration device with Aligners:" followed by a text input field and "USD". At the bottom, there is a "Trim Type & Height" button, a "Close" button, and a "Next" button.

*Note: This enhancement does not apply for Hong Kong users. Hong Kong users will continue to order the SureSmile® VPro™ device using the existing 3rd party link.*

SureSmile<sup>®</sup>

